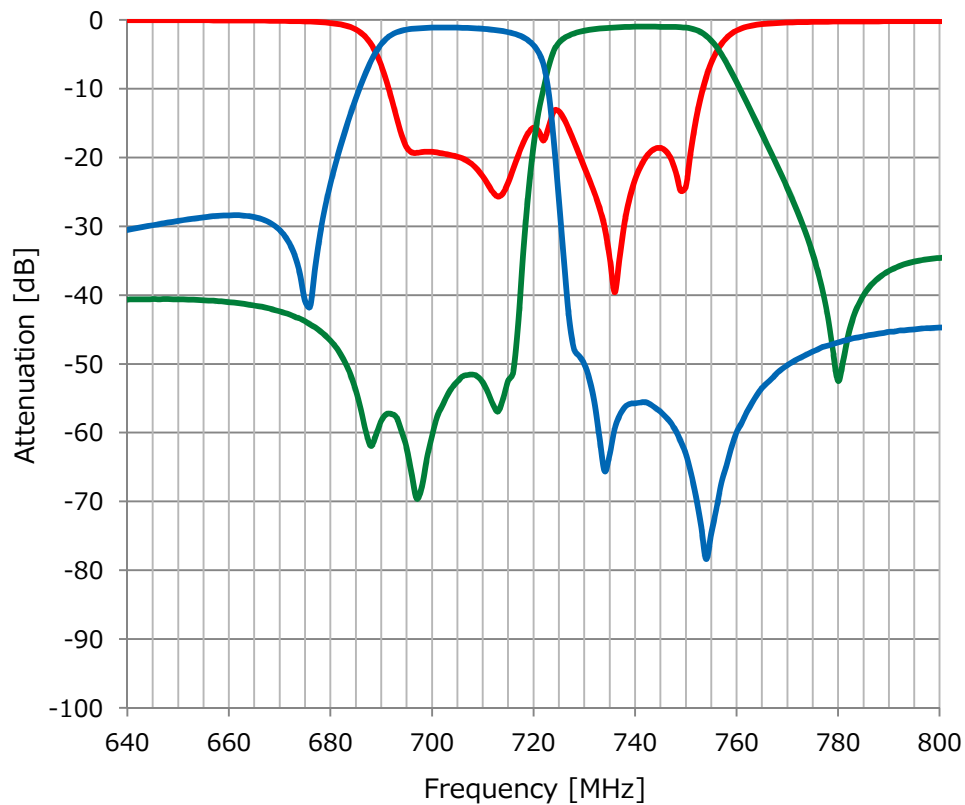


WDUP-A013

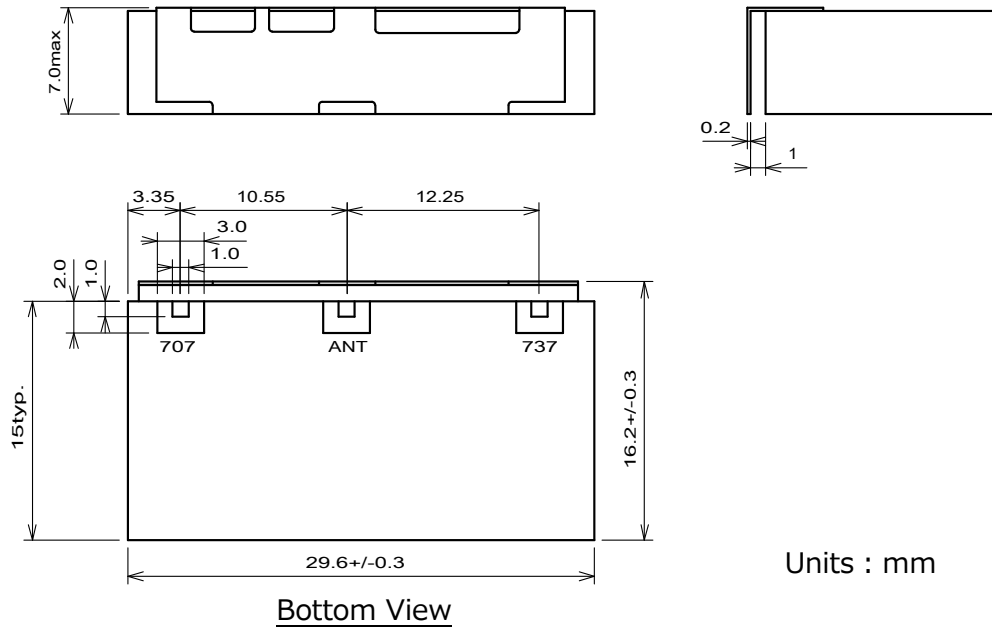
Electrical Specifications

Parameter	Frequency [MHz]	Specification -40°C to 85°C	Typical Value @25°C
ANT to RX / RX to ANT			
Insertion Loss	698 – 716	2.5dB max	1.9dB
Passband Ripple	698 – 716	1.5dB max	1.0dB
VSWR	698 – 716	1.7 max	1.3
Attenuation	728 – 746	40dB min	43dB
TX to ANT / ANT to TX			
Insertion Loss	728 – 746	2.5dB max	1.9dB
Passband Ripple	728 – 746	1.5dB max	0.9dB
VSWR	728 – 746	1.7 max	1.4
Attenuation	698 – 716	45dB min	48dB
Impedance		50 Ohm	50 Ohm
Input power		2Watt max	

Electrical Performance



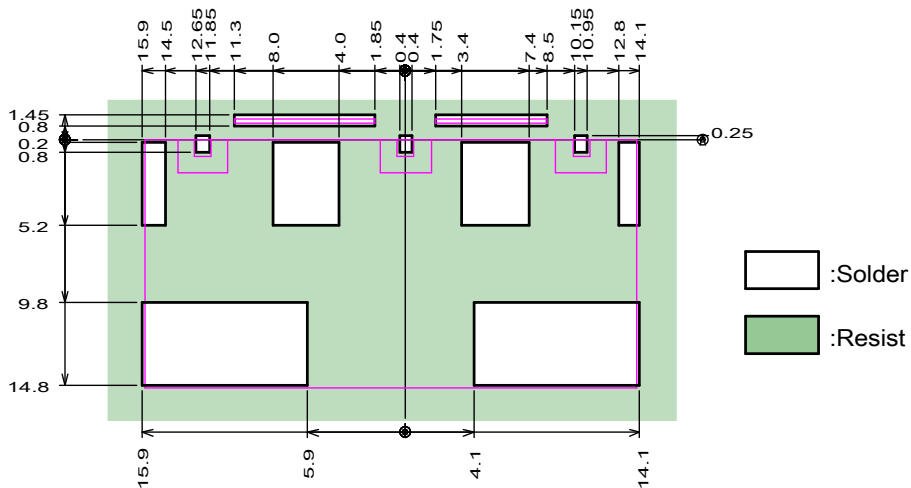
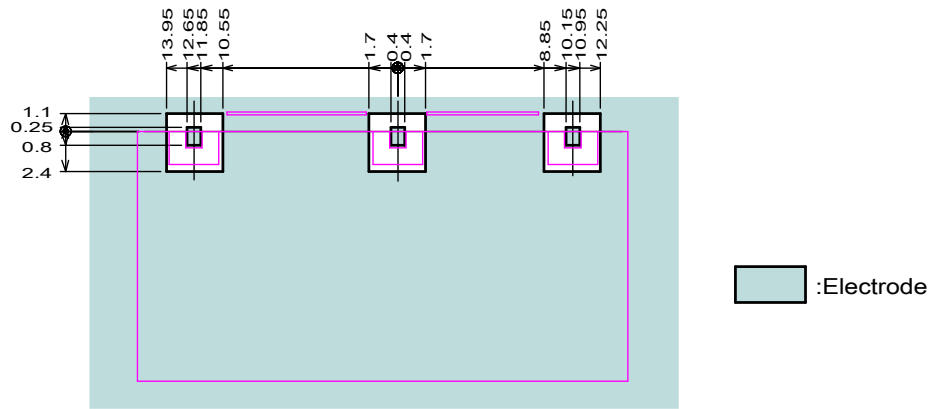
Mechanical Dimension



Units : mm

Tolerance unless otherwise specified : +/-0.2mm

Referenced Land Pattern



Units : mm