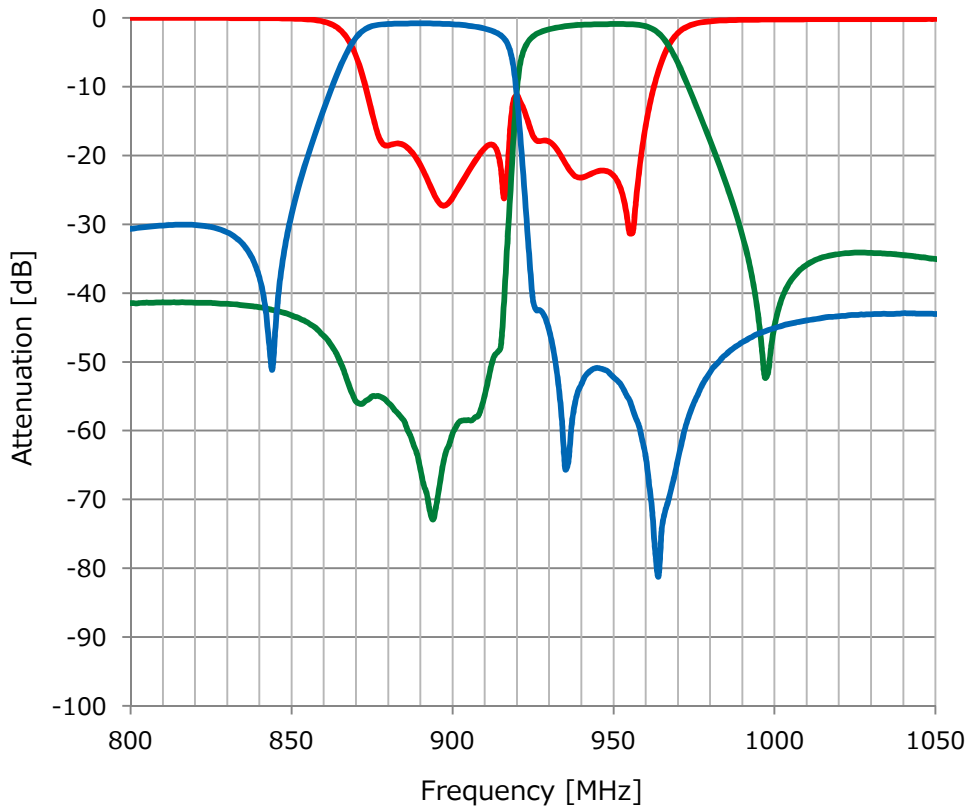


WDUP-A005

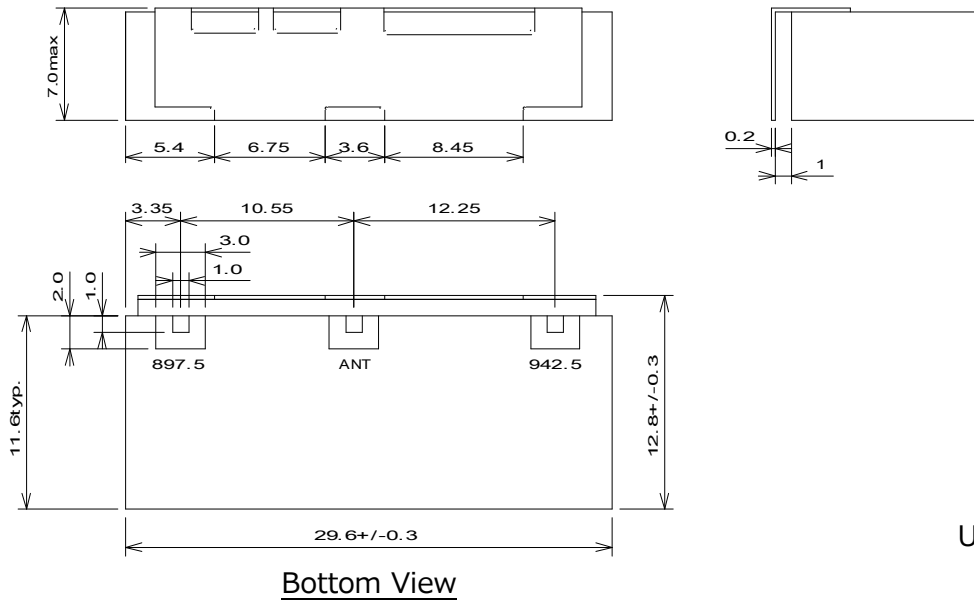
Electrical Specifications

Parameter	Frequency [MHz]	Specification -40°C to 85°C	Typical Value @25°C
TX to ANT / ANT to TX			
Insertion Loss	880 – 915	3.7dB max	3.0dB
Passband Ripple	880 – 915	2.5dB max	2.1dB
VSWR	880 – 915	1.8 max	1.4
Attenuation	925 – 960	38dB min	42dB
ANT to RX / RX to ANT			
Insertion Loss	925 – 960	3.4dB max	2.7dB
Passband Ripple	925 – 960	2.3dB max	1.8dB
VSWR	925 – 960	1.8 max	1.4
Attenuation	880 – 915	40dB min	45dB
Impedance		50 Ohm	50 Ohm
Input power		2Watt max	

Electrical Performance



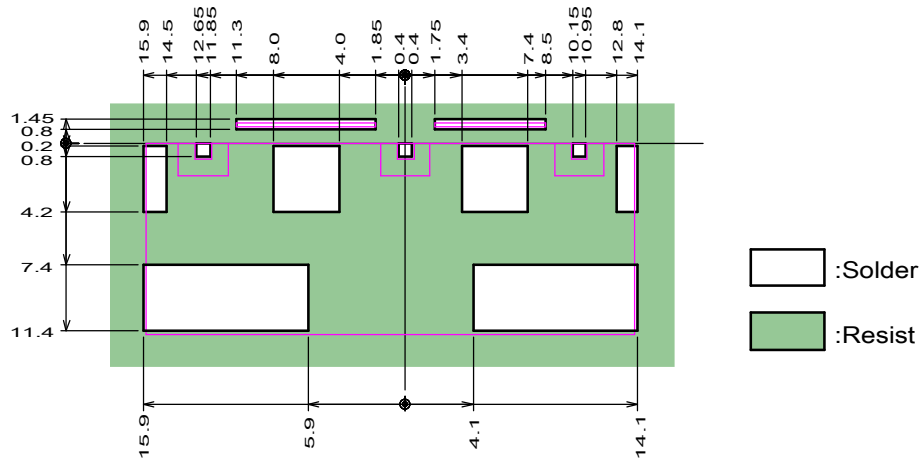
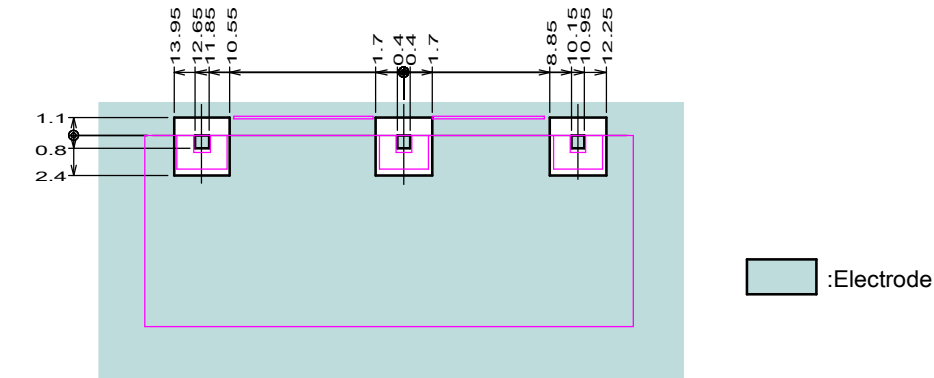
Mechanical Dimension



Units : mm

Tolerance unless otherwise specified : +/-0.2mm

Referenced Land Pattern



Units : mm